

Response Flowchart and Procedures for Handling 'Other Contacts'* of Covid-19 Cases at RCs

Receive from Safety Officer
(FHS) information about
identified students



RCU to verify the residents' status and location (RC & room number)



RCU to contact the residents and verify the location where
they are staying



- (a) For residents staying at home: advise them to remain at home and take the test ASAP.
- (b) For residents staying at RC: advise them to return home for self-isolation and take medical test ASAP. If the residents can't return home or stay outside but have to stay at RC room for self-isolation, RCU to facilitate self-isolation and pass the test kit.



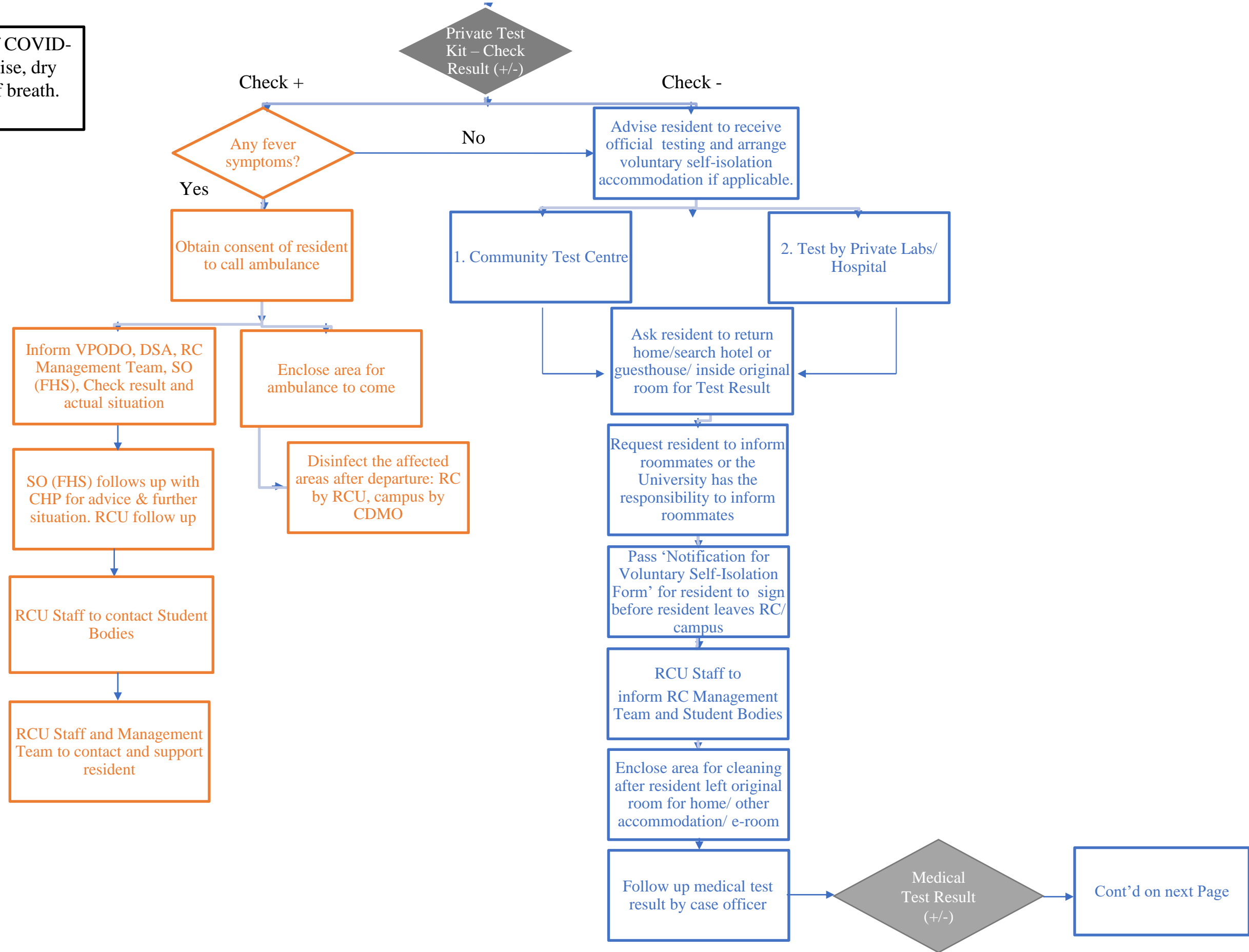
** There is no definition of "other contacts" by the CHP.*

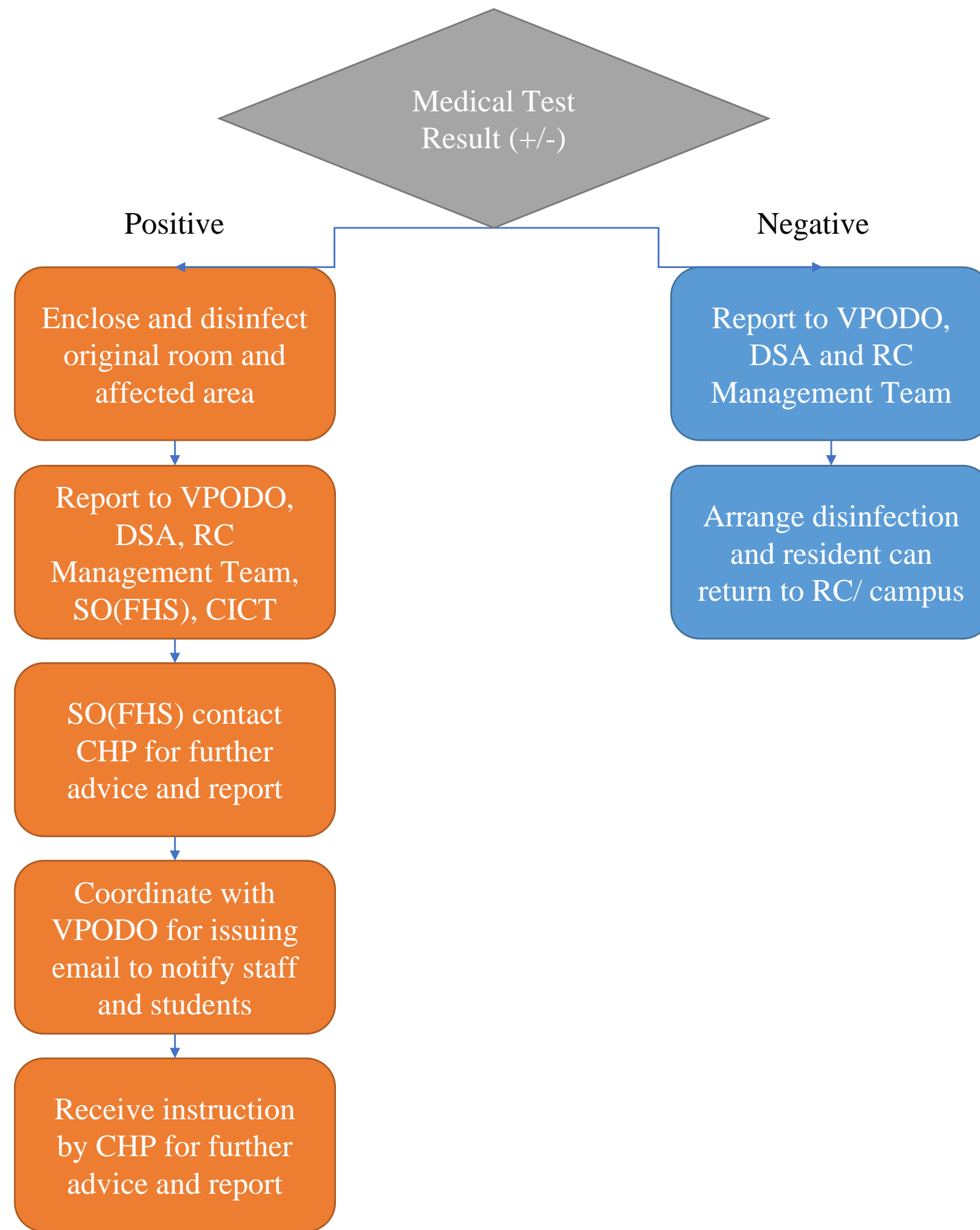
Once a preliminary test positive/confirmed case is diagnosed by the CHP, contact tracing will be conducted. Any individuals who are not classified as "close contacts" but with certain extent of exposure with the preliminary test positive/confirmed case may be classified as "other contacts".

Normally, "other contacts" are advised by the CHP to undergo medical surveillance (i.e. pay attention to any symptoms and/or to conduct the test). They are also advised to seek medical advice and to take the medical test ASAP.

In case 'Other Contacts' at the RC are identified, pass Private COVID-19 Test Kit to residents for initial checking

*Common symptoms of COVID-19 include fever, malaise, dry cough and shortness of breath.





Guide for Receiving COVID-19 Medical Tests

1. Private COVID-19 Test Kit

- Please conduct the testing by following the instructions in the video (scan QR code)
- Take a picture of the result and send it to the RCU Case Officer.



<https://youtu.be/n6H-8xql-dk>



2. Official COVID-19 Testing

You are also advised to receive official COVID-19 testing by one of the following means and notify the RCU Case Officer the test result as soon as possible.

a. Community Test Centre

You are strongly encouraged to make an appointment (scan QR code for details)



<https://www.communitytest.gov.hk/en/>

b. Private Labs/Hospitals

Receive testing at testing institutes recognized by the HKSAR Government (Scan QR code for the list).



https://www.coronavirus.gov.hk/pdf/List_of_recognised_laboratories.pdf



3. Complete the “Notification for COVID-19 Test and Voluntary Self-Isolation” before leaving RC/Campus.

快速抗原檢測試劑盒使用指引

1. 快速抗原檢測試劑盒

- 請掃瞄二維碼，並按照影片的指示進行測試。
- 拍攝測試結果並發送給RCU Case Officer 以作跟進。



<https://youtu.be/n6H-8xql-dk>

2. 正式新型冠狀病毒測試

你亦應盡快接受以下其中一項正式的新型冠狀病毒測試，並於知悉結果後立刻通知RCU Case Officer。

a. 社區檢測中心

建議你先於網上預約以獲得優先服務。詳情請掃瞄二維碼。



<https://www.communitytest.gov.hk/en/>

b. 私家醫院、檢測機構醫生提供的服務

在香港特區政府認可的本地醫療檢測機構接受測試(詳情請掃瞄二維碼)。



https://www.coronavirus.gov.hk/pdf/List_of_recognised_laboratories.pdf

3. 離開住宿書院/校園前，請填妥「自願自我隔離通知書」並交回RCU Case Officer。