

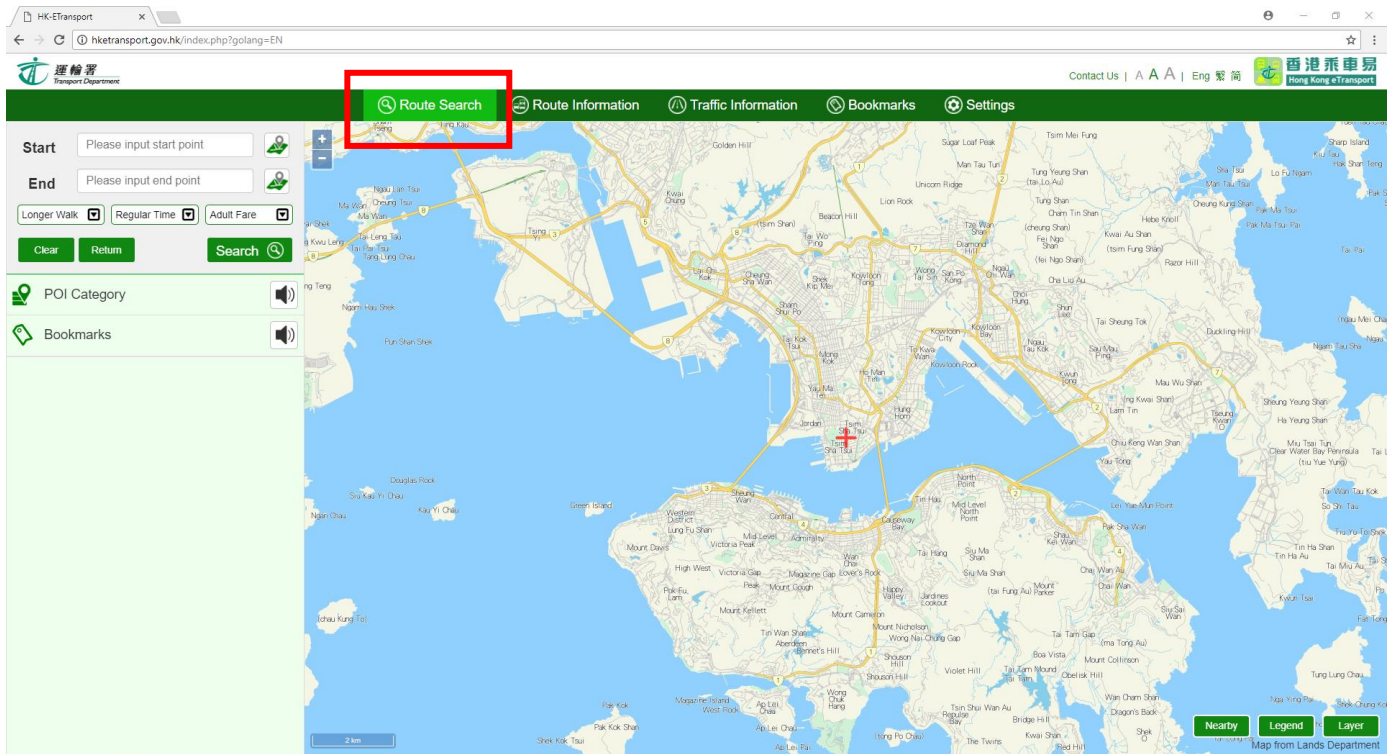
Calculation Method of the Score “Home Distance from HSUHK”
for Residential Colleges Application of 2020/21
(maximum: 50 points)

“Hong Kong eTransport” (<http://hketransport.gov.hk>), an on-line platform administered by the Transport Department, is proposed to be used for calculating the travelling time, with the following parameters set.

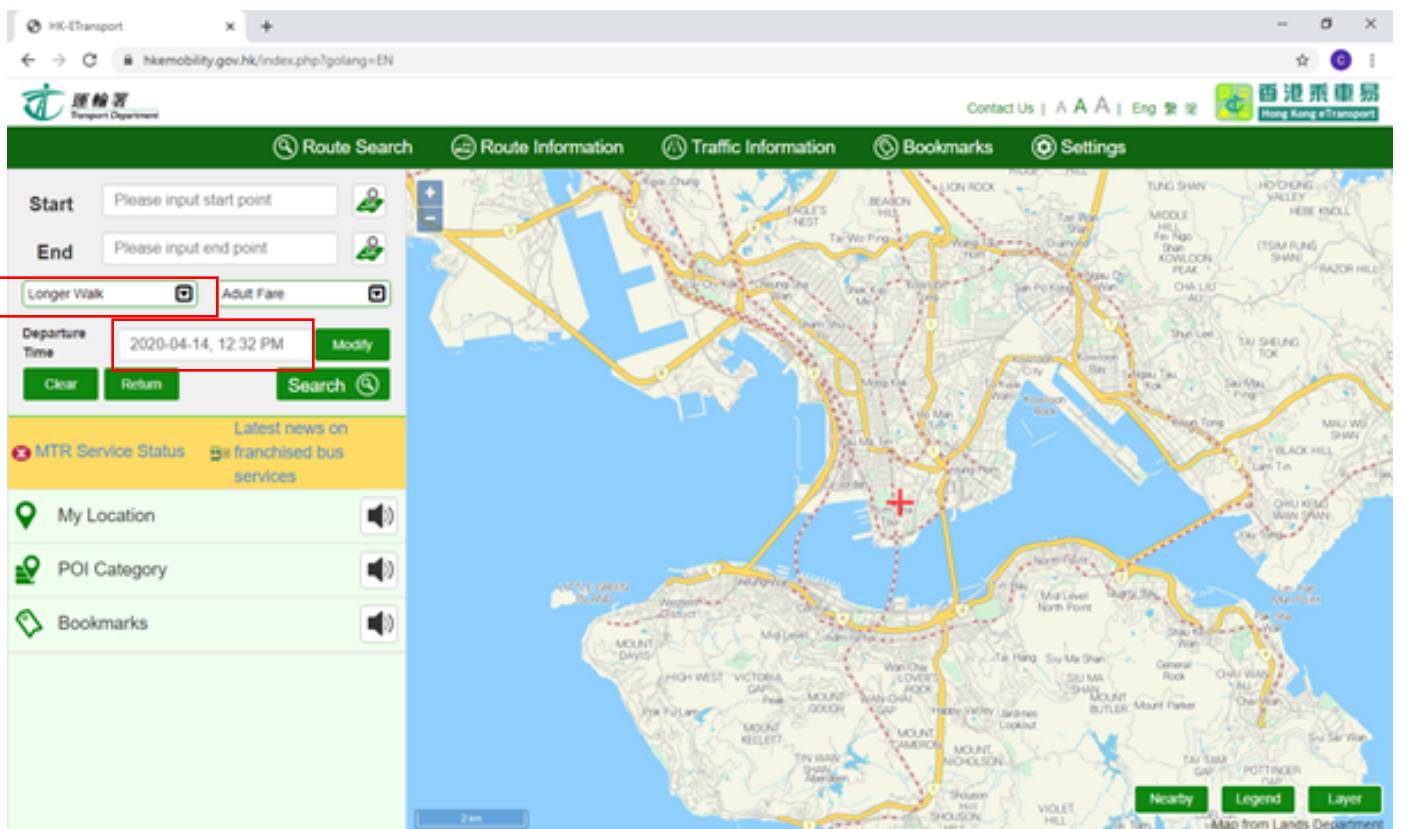
1. Home address refers to student’s official record maintained by the Registry. Address proof showing student name and residential address within latest three months before the start date of Residential Colleges application of 2019/20 is required.
2. Applicants are required to choose “The Hang Seng University of Hong Kong” as the destination for calculating the time required.
3. Travelling time is calculated using the Hong Kong eTransport, taking into account the following factors:
 - Walking distance: 400m from starting point / destination;
 - “All Service” and “Time” should be selected when filtering the results;
 - Search result involving time or day specific or temporary transport services normally would not be counted; it would be counted only when they were the only options available.
 - In any case, the shortest travelling time shown in the search result would be used.
 - To ensure objectivity, personal preference and travelling cost would not be taken into consideration.
4. The travelling time will be converted into home distance scores in accordance with the below table. Maximum score of 50 points would be given to students with a travelling time of 120 minutes or more.

Corresponding Scores	Time Taken in Travelling to HSUHK (minutes, for single trip)
50	At 120 or more / Non-local students
48	115
46	110
44	105
42	100
40	95
38	90
36	85
34	80
32	75
30	70
28	65
26	60
24	55
22	50
20	45
18	40
16	35
14	30
12	25
10	20
8	15
6	10
4	5
0	4 or less

Step 1: Connect to the website of “HKeTransport” (<http://hketransport.gov.hk>) and “Route Search” function should be used.

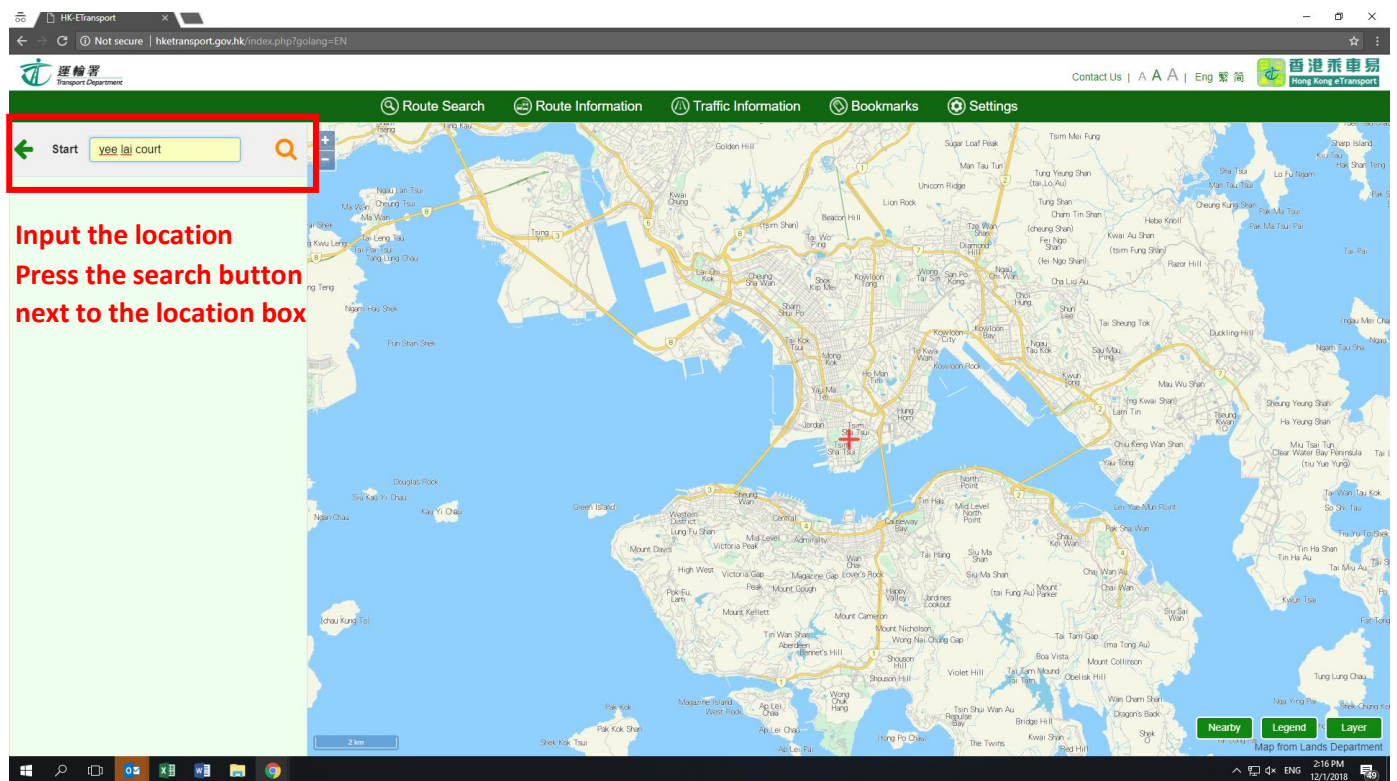
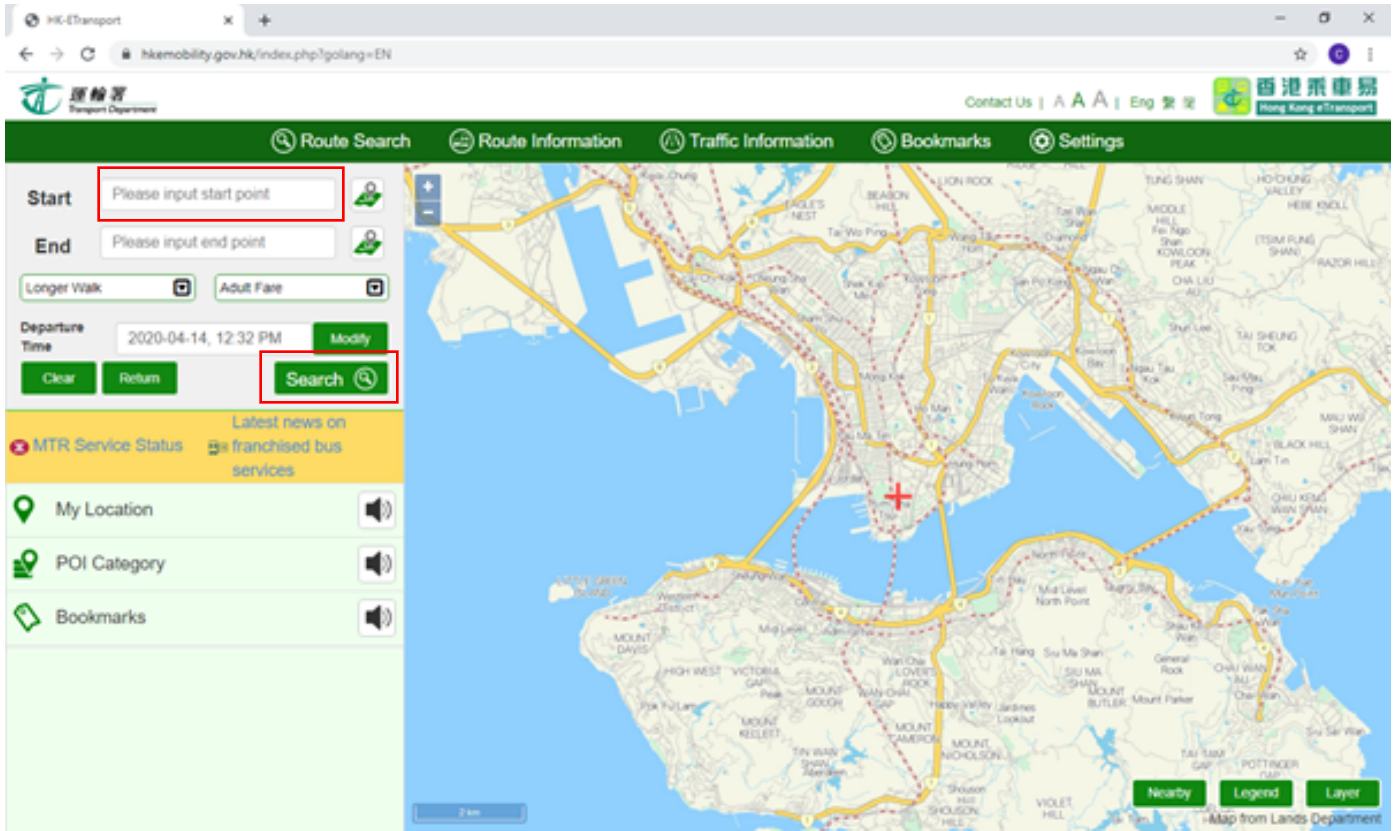


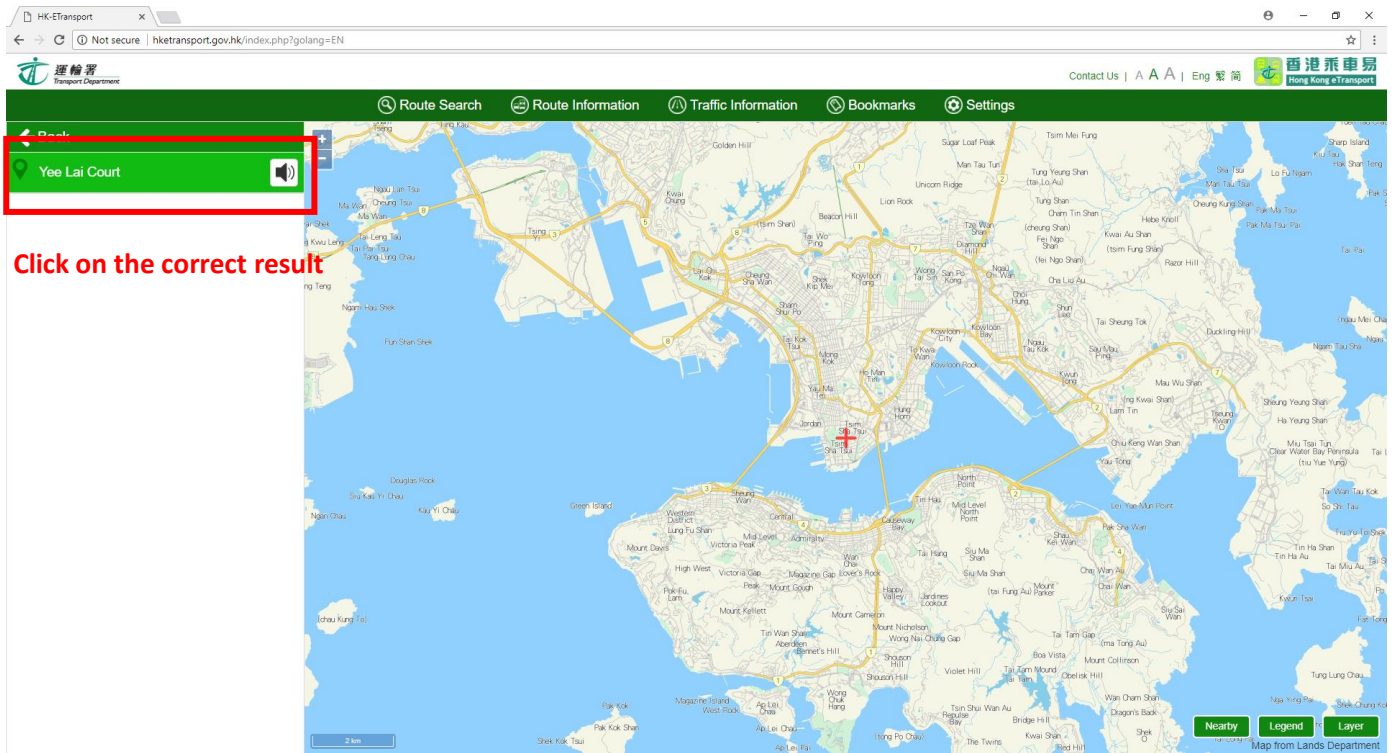
Step 2: "Longer Walk" should be selected and a regular time of the current day should be input.



Step 3: Type in your home address into “Start” and search.

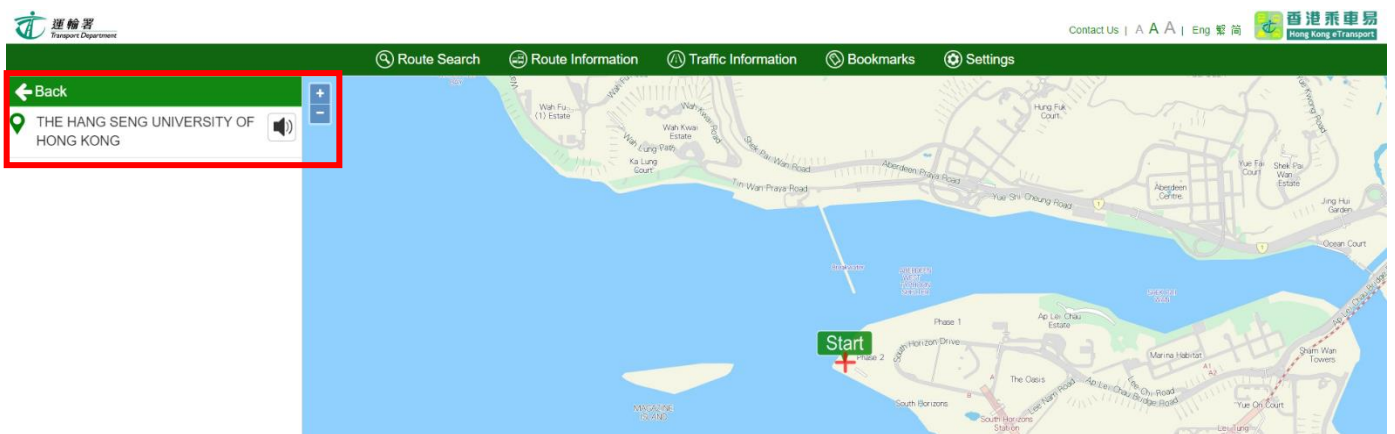
Example: Yee Lai Court



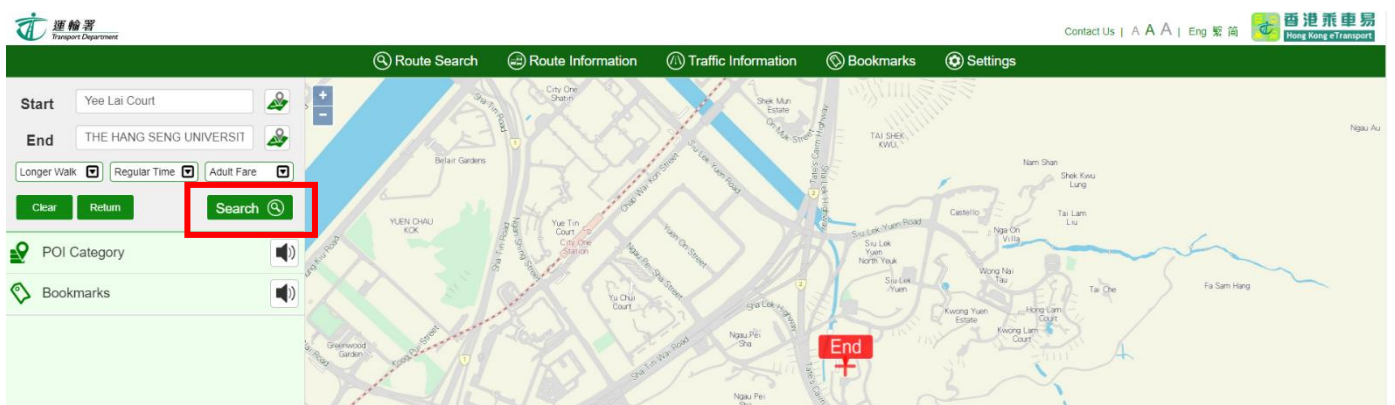


Click on the correct result

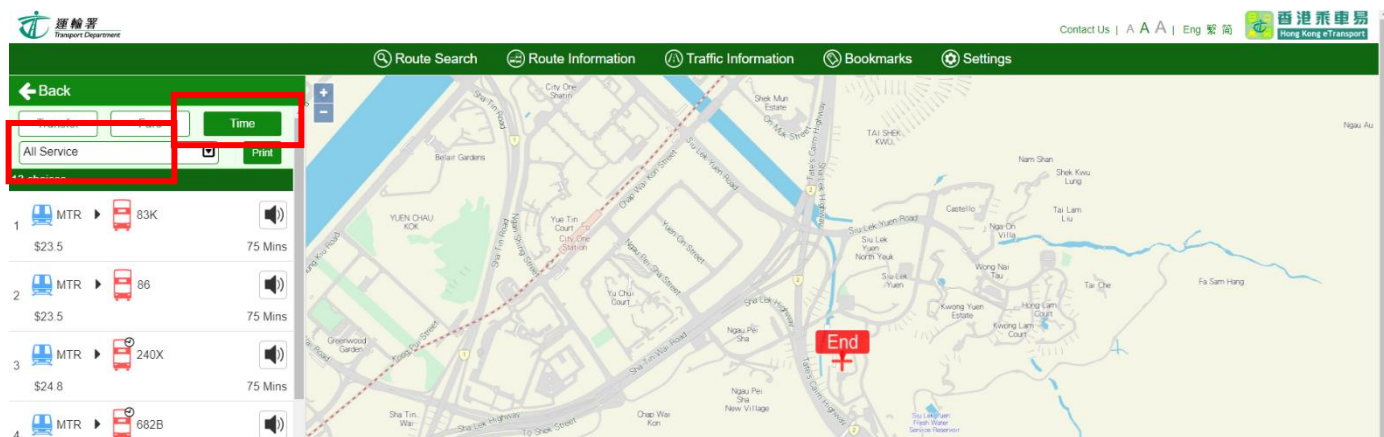
Step 3: Type in “The Hang Seng University of Hong Kong” into “End” and select the correct destination with the same letters.



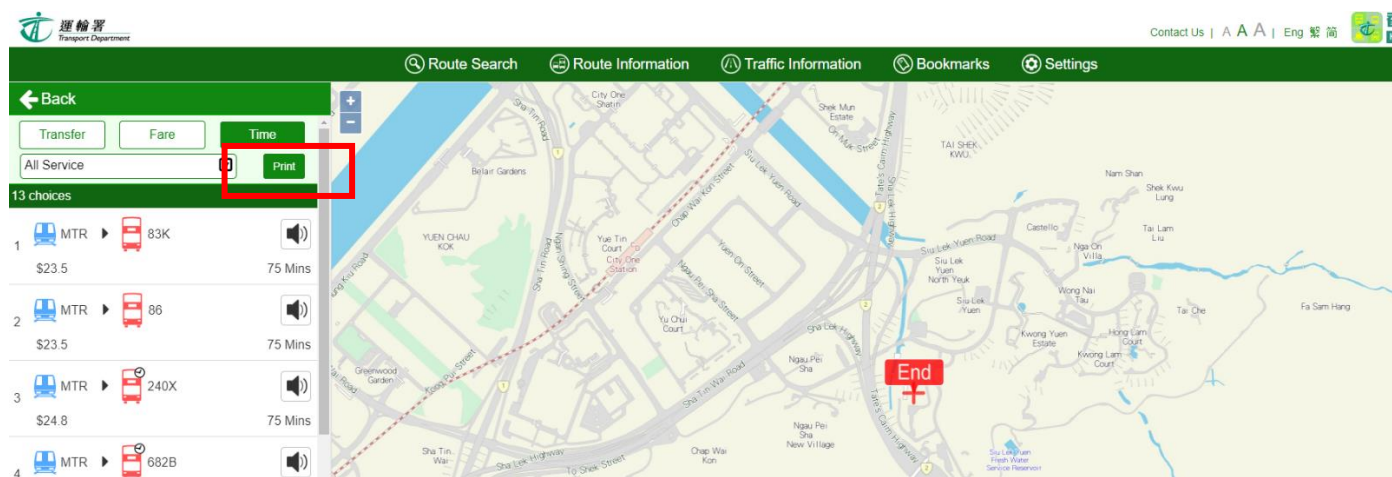
Step 4: Click “Search”.



Step 5: The results will be shown. Click "Time" and "All Service" to filter the best results.



Step 6: Press "Print" to get the travelling time from your home address to The Hang Seng University of Hong Kong.



Step 7: Dump the screen and upload it into your online Residential Colleges application.

Route Details	Routes	Pick Up	Drop Off	Fare	Est. Time (Min)
1	MTR	MTR South Horizons Station - B	MTR City One Station - D	\$23.5	75Mins
	KMB 83K	SIU LEK YUEN FIRE STATION	HANG SENG UNIVERSITY OF HONG KONG		
2	MTR	MTR South Horizons Station - B	MTR City One Station - B	\$23.5	75Mins
	KMB 86	CITY ONE STATION	HANG SENG UNIVERSITY OF HONG KONG		
3	MTR	MTR South Horizons Station - B	MTR City One Station - B	\$24.8	75Mins
	KMB 240X	City One Station	HANG SENG UNIVERSITY OF HONG KONG		
4	MTR	MTR South Horizons Station - B	MTR City One Station - B	\$36	75Mins
	NWFB 682B	City One Station	Hang Seng University Of Hong Kong, Kwong Sin Street		
5	MTR	MTR South Horizons Station - B	MTR Shek Mun Station - A	\$36	75Mins
	NWFB 682C	Siu Lek Yuen Road Playground, Siu Lek Yuen Road	Hang Seng University Of Hong Kong, Kwong Sin Street		

Determination of Home Distance Score

From this example, there are 13 search results. Based on the criteria,

1. The search result involving time or day specific or temporary transport services normally would not be counted;
2. The shortest travelling time will only be counted.

According to the above criteria, the option 3 – 11 and 13 should be excluded. As a result, the shortest travelling time is option 1 or 2 (same estimated travelling time), its travelling time is 75 minutes and the corresponding home distance score is 32.

Origin: Yee Lai Court
 Destination: THE HANG SENG UNIVERSITY OF HONG KONG
 Transport Mode: Regular Time
 Origin Walking Dist.: 400m
 Destination Walking Dist.: 400m
 Sort By: Time
 Category: All Service

Route Details	Routes	Pick Up	Drop Off	Fare	Est. Time (Min)
1	MTR KMB 83K	MTR South Horizons Station - B SIU LEK YUEN FIRE STATION	MTR City One Station - D HANG SENG UNIVERSITY OF HONG KONG	\$23.5	75Mins
2	MTR KMB 86	MTR South Horizons Station - B CITY ONE STATION	MTR City One Station - B HANG SENG UNIVERSITY OF HONG KONG	\$23.5	75Mins
3	MTR KMB 240X	MTR South Horizons Station - B City One Station	MTR City One Station - B HANG SENG UNIVERSITY OF HONG KONG	\$24.8	75Mins
4	MTR NWFB 682B	MTR South Horizons Station - B City One Station	MTR City One Station - B Hang Seng University Of Hong Kong, Kwong Sin Street	\$36	75Mins
5	MTR NWFB 682C	MTR South Horizons Station - B Siu Lek Yuen Road Playground, Siu Lek Yuen Road	MTR Shek Mun Station - A Hang Seng University Of Hong Kong, Kwong Sin Street	\$36	75Mins
6	MTR KMB 83S	MTR South Horizons Station - B GREENFIELD COURT	MTR Sha Tin Wai Station - C HANG SENG UNIVERSITY OF HONG KONG	\$23.5	90Mins
7	KMB/CTB 171P KMB 240X	HOI WAN COURT/Hoi Wan Court South Horizons, South Horizons Drive CHEUNG LAI STREET CHEUNG SHA WAN	CHEUNG LAI STREET CHEUNG SHA WAN/Cheung Lai Street, Cheung Sha Wan Road HANG SENG UNIVERSITY OF HONG KONG	\$21.8	100Mins
8	KMB/CTB 171 KMB 240X	HOI WAN COURT/Hoi Wan Court South Horizons, South Horizons Drive CHEUNG LAI STREET CHEUNG SHA WAN	CHEUNG LAI STREET CHEUNG SHA WAN/Cheung Lai Street, Cheung Sha Wan Road HANG SENG UNIVERSITY OF HONG KONG	\$21.8	105Mins
9	KMB/CTB 671 NWFB 682B	HOI WAN COURT/Hoi Wan Court South Horizons, South Horizons Drive Eastern Harbour Crossing Toll Plaza	EASTERN HARBOUR TUNNEL/Eastern Harbour Crossing Toll Plaza Hang Seng University Of Hong Kong, Kwong Sin Street	\$22.3	110Mins
10	CTB 99X NWFB 682B	HOI WAN COURT South Horizons, South Horizons Drive Sunway Gardens, King's Road	Sunway Gardens, King's Road Hang Seng University Of Hong Kong, Kwong Sin Street	\$27.7	110Mins
11	KMB/CTB 171 KMB 240X	HOI WAN COURT/Hoi Wan Court South Horizons, South Horizons Drive CHEUNG LAI STREET CHEUNG SHA WAN	CHEUNG LAI STREET CHEUNG SHA WAN/Cheung Lai Street, Cheung Sha Wan Road HANG SENG UNIVERSITY OF HONG KONG	\$21.8	115Mins
12	KMB/CTB 671 KMB 83X	HOI WAN COURT/Hoi Wan Court South Horizons, South Horizons Drive KAI TAI COURT	KAI TAI COURT/Kai Tai Court, Kwun Tong Road HANG SENG UNIVERSITY OF HONG KONG	\$19	120Mins
13	CTB 99 NWFB 682B	HOI WAN COURT South Horizons, South Horizons Drive Healthy Village, King's Road	Healthy Village, King's Road Hang Seng University Of Hong Kong, Kwong Sin Street	\$27.7	120Mins